

ROTOR

The unique
switched interlocked
mobile socket



ELECTRICAL SYSTEMS

Palazzoli



Safety anywhere

The ROTOR interlocked extension can be used in:

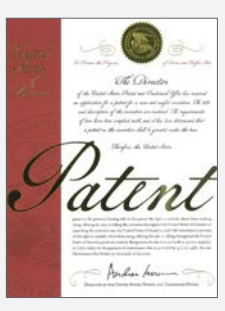
- public places, entertainment areas, major events;
- marinas, commercial ports and shipyards;
- camp and building sites;
- quarries, mines, agricultural and food industry;
- external floor boxes, distribution boards, automation boards.





ROTOR

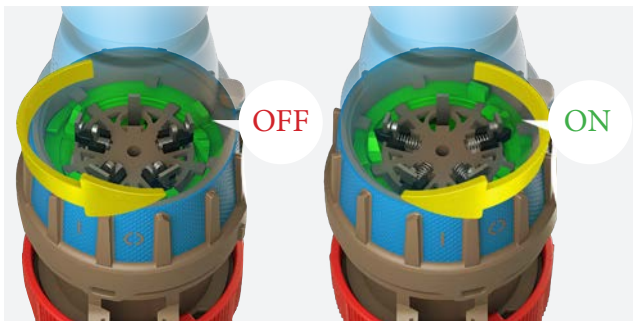
Safety anywhere



USA patent



RUSSIA patent



The plug is plugged into the socket that is not powered: the switch snaps automatically when the safety ring is turned counterclockwise, therefore energy is drawn in total safety.

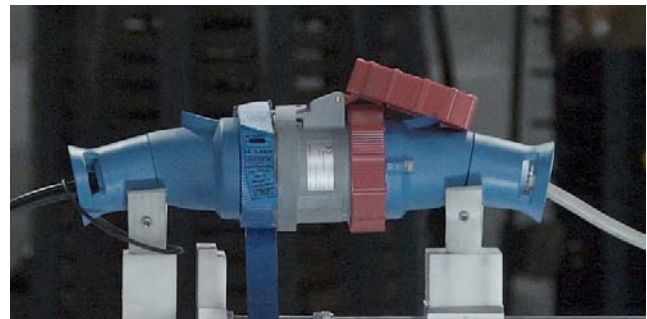
Indirect clamping HD terminals are standard throughout the range. They guarantee the integrity of the cables for an even passage of current and prevent overheating and cable breakage.

YESTERDAY

TODAY



A socket connected to a load with a failure downstream of the plug was cause of explosion with electrocution of the operator.



ROTOR is the unique interlocked mobile socket on the market. It saves life because it prevents both the formation of the electric arcing as well as any unwanted disconnections.



Socket-outlets with isolator switch, safety performance, compliant with IEC/EN 60309-1, IEC/EN 60309-2 and IEC/EN 60309-4 standards. The quality of the materials, the terminals with cage clamps throughout the range, the broad entry cable clamping, the total protection rating, the resistance to impacts and crushing make this range suitable for use in the harshest environments.

Moreover, the range distinguishes itself for its simplicity of use: easy cable clamping, possibility of use in suspension, absence of screws to secure the grips, ergonomics of shapes.

Versions not available directly with a code in the catalogue can be realised by composing the plug insert with the grip or flange to achieve the desired configuration.

The interlock system is made with reinforced technopolymer elements and the switch disconnecter is certified to the AC-23A category.

The mobile rotoswitches guarantee safety for the operators in any work environment.

Rated operating current:

			16A	32A	63A	125A
Thermal current I _{th}		A	16	32	63	125
AC21A		A	16	32	63	125
AC22A		A	16	32	63	125
AC23A		A	16	32	63	125
AC23A	230V	kW	5.1	10.2	20.1	39.8
	400V		8.9	17.7	34.9	69.3
	500V		11.1	22.2	43.6	86.6
	690V		15.3	30.6	60.2	120

Cable features:

Rated current (A)	Poles	Entry cable diameter (mm)	Cable cross-section range (mm ²)
16	2P+⊕	6.3 - 18	1 - 10
	3P+⊕		
	3P+N+⊕	9 - 23	
32	2P+⊕	9 - 23	1 - 10
	3P+⊕		
	3P+N+⊕	13 - 27	
63	2P+⊕	14 - 36	6 - 25
	3P+⊕		
	3P+N+⊕		
125	2P+⊕	20 - 50	16 - 70
	3P+⊕		
	3P+N+⊕		

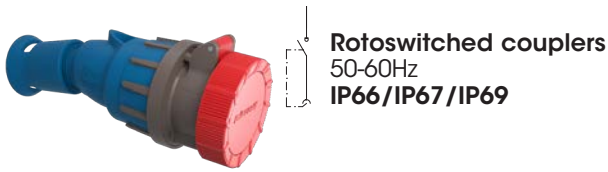
Compliance with standards	IEC/EN 60309-1 IEC/EN 60309-2 IEC/EN 60309-4 IEC/EN 60947-3
Casing material	Heavy-duty technopolymer
Protection rating (IP according to IEC/EN 60529)	IP66/IP67/IP69
Colour	RAL 7046 Grey, RAL 5015 Blue
Receptacle material	Solid nickel-plated brass
Resistance to abnormal heat and fire ("Glow wire" according to IEC/EN 60695-2-10)	960°C (wire terminal block) 850°C (casings)
Flammability rating (according to UL94)	V0 (wire terminal block) V2 (casings)
Impact resistance (IK grade according to IEC/EN 62262)	IK10
Resistance to crushing	> 500Kg
Rated current	16A - 32A - 63A - 125A
Operating voltage	50V ÷ 690V
Utilisation category	AC-23A
Operating frequency	0-50Hz ÷ 500Hz
Insulation voltage	690V
Storage temperature	-50°C ÷ +90°C
Operating temperature	-40°C ÷ +60°C



Resistance to chemical agents

WATER	SALINE SOLUTION	ACIDS		BASES		SOLVENTS			
		CONCENTRATED	DILUTED	CONCENTRATED	DILUTED	ALCOHOL	ACETONE	PERCHLOROETHYLENE	BENZENE
↑	↑	→	→	↑	↑	↑	↑	↑	↑
OILS		FATS		AMMONIA	OXIDISERS	INORGANIC SALTS	GASOLINE	DETERGENTS	U.V. RAYS
MINERAL	VEGETABLE	ANIMAL	SYNTHETIC						
↑	↑	↑	↑	↑	↑	↑	↑	↑	↑

Legend: ↑ high resistance → partial resistance ↓ low resistance



Rotoswitched couplers
50-60Hz
IP66/IP67/IP69

Rated current (A)	Rated voltage	Voltage colour	Poles	h ref.	Palazzoli code	Pack Qty
16	110V	Yellow	2P+⊕	4	410124	1
	110V	Yellow	3P+⊕	4	410134	1
	110V	Yellow	3P+N+⊕	4	410144	1
	230V	Blue	2P+⊕	6	410126	1
	230V	Blue	3P+⊕	9	410139	1
	230V	Blue	3P+N+⊕	9	410149	1
	400V	Red	2P+⊕	9	410129	1
	400V	Red	3P+⊕	6	410136	1
	400V	Red	3P+N+⊕	6	410146	1
	500V	Black	3P+⊕	7	410137	1
500V	Black	3P+N+⊕	7	410147	1	
32	110V	Yellow	2P+⊕	4	410224	1
	110V	Yellow	3P+⊕	4	410234	1
	110V	Yellow	3P+N+⊕	4	410244	1
	230V	Blue	2P+⊕	6	410226	1
	230V	Blue	3P+⊕	9	410239	1
	230V	Blue	3P+N+⊕	9	410249	1
	400V	Red	2P+⊕	9	410229	1
	400V	Red	3P+⊕	6	410236	1
	400V	Red	3P+N+⊕	6	410246	1
	500V	Black	3P+⊕	7	410237	1
500V	Black	3P+N+⊕	7	410247	1	
380-440V	Red	3P+⊕	3	410233	1	
63	110V	Yellow	2P+⊕	4	410324	1
	110V	Yellow	3P+⊕	4	410334	1
	110V	Yellow	3P+N+⊕	4	410344	1
	230V	Blue	2P+⊕	6	410326	1
	230V	Blue	3P+⊕	9	410339	1
	230V	Blue	3P+N+⊕	9	410349	1
	400V	Red	2P+⊕	9	410329	1
	400V	Red	3P+⊕	6	410336	1
	400V	Red	3P+N+⊕	6	410346	1
	500V	Black	3P+⊕	7	410337	1
500V	Black	3P+N+⊕	7	410347	1	
125	110V	Yellow	3P+⊕	4	410434	1
	110V	Yellow	3P+N+⊕	4	410444	1
	230V	Blue	3P+⊕	9	410439	1
	230V	Blue	3P+N+⊕	9	410449	1
	400V	Red	3P+⊕	6	410436	1
	400V	Red	3P+N+⊕	6	410446	1
	500V	Black	3P+⊕	7	410437	1
	500V	Black	3P+N+⊕	7	410447	1

Features: rotoswitches padlockable in position 0 and 1 with padlock code 419000.

The sockets are designed to allow for padlocking, either in a stand-alone fashion or connected to the plugs. The padlock must have a min. shackle width of 10.5 mm, a height of 32 mm and a max. wire Ø of 3.5 mm.

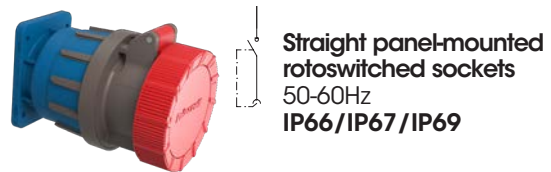
Note: 125A versions under development.



Interlocked extension with rotoswitch and 20 m cable
IP66/IP67

Rated current (A)	Rated voltage	Voltage colour	Poles	h ref.	Palazzoli code	Pack Qty
16	110	Yellow	2P+⊕	4	670013	1
	230	Blue	2P+⊕	6	670010	1
	400	Red	3P+⊕	6	670011	1
		Red	3P+N+⊕	6	670012	1

Equipment included: 20 m of H 07 RN-F 2.5 mm² cable for connection to the plug.



Straight panel-mounted rotoswitched sockets
50-60Hz
IP66/IP67/IP69

Rated current (A)	Rated voltage	Flange dimensions (mm)	Voltage colour	Poles	h ref.	Palazzoli code	Pack Qty
16	110V	65x83	Yellow	2P+⊕	4	412124	1
	230V	65x83	Blue	2P+⊕	6	412126	1
	400V	65x83	Red	3P+⊕	6	412136	1
	400V	65x83	Red	3P+N+⊕	6	412146	1
32	110V	65x83	Yellow	2P+⊕	4	412224	1
	230V	65x83	Blue	2P+⊕	6	412226	1
	400V	65x83	Red	3P+⊕	6	412236	1
	400V	100x108	Red	3P+N+⊕	6	412246	1
63	380-440V	65x83	Red	3P+⊕	3	412233	1
	400V	100x108	Red	3P+⊕	6	412336	1
	400V	100x108	Red	3P+N+⊕	6	412346	1
125	400V	114x114	Red	3P+⊕	6	412436	1
	400V	114x114	Red	3P+N+⊕	6	412446	1

Note: 125A versions under development.



20° angled panel-mounted rotoswitched sockets
50-60Hz
IP66/IP67/IP69

Rated current (A)	Rated voltage	Flange dimensions (mm)	Voltage colour	Poles	h ref.	Palazzoli code	Pack Qty
16	110V	65x83	Yellow	2P+⊕	4	413124	1
	230V	65x83	Blue	2P+⊕	6	413126	1
	400V	65x83	Red	3P+⊕	6	413136	1
	400V	65x83	Red	3P+N+⊕	6	413146	1
32	110V	65x83	Yellow	2P+⊕	4	413224	1
	230V	65x83	Blue	2P+⊕	6	413226	1
	400V	65x83	Red	3P+⊕	6	413236	1
	400V	100x108	Red	3P+N+⊕	6	413246	1
63	400V	100x108	Red	3P+⊕	6	413336	1
	400V	100x108	Red	3P+N+⊕	6	413346	1
	400V	114x114	Red	3P+⊕	6	413436	1
125	400V	114x114	Red	3P+N+⊕	6	413446	1

Note: 125A versions under development.



65° angled wall-mounted rotoswitched sockets
50-60Hz
IP66/IP67/IP69

Rated current (A)	Rated voltage	Voltage colour	Poles	h ref.	Palazzoli code	Pack Qty
16	110V	Yellow	2P+⊕	4	416124	1
	230V	Blue	2P+⊕	6	416126	1
	400V	Red	3P+⊕	6	416136	1
	400V	Red	3P+N+⊕	6	416146	1
32	110V	Yellow	2P+⊕	4	416224	1
	230V	Blue	2P+⊕	6	416226	1
	400V	Red	3P+⊕	6	416236	1
	400V	Red	3P+N+⊕	6	416246	1
63	400V	Red	3P+⊕	6	416336	1
	400V	Red	3P+N+⊕	6	416346	1
125	400V	Red	3P+⊕	6	416436	1
	400V	Red	3P+N+⊕	6	416446	1

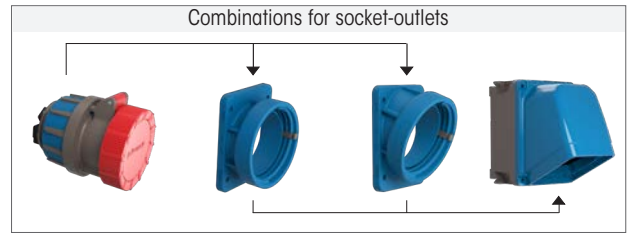
Common features: rotoswitches padlockable in position 0 and 1 with padlock code 419000.

The sockets are designed to allow for padlocking, either in a stand-alone fashion or connected to the plugs. The padlock must have a min. shackle width of 10.5 mm, a height of 32 mm and a max. wire Ø of 3.5 mm.

Note: 125A versions under development.



**Rotoswitched sockets
IP66/IP67/IP69**



Rated current (A)	Frequency	Rated voltage	Voltage colour	Poles	h ref.	Palazzoli code	Pack Qty	
16	50-60Hz	110V	Yellow	2P+⊕	4	419124	1	
	50-60Hz	110V	Yellow	3P+⊕	4	419134	1	
	50-60Hz	110V	Yellow	3P+N+⊕	4	419144	1	
	50-60Hz	220V	Blue	2P+⊕	6	419126	1	
	50-60Hz	220V	Blue	3P+⊕	9	419139	1	
	50-60Hz	220V	Blue	3P+N+⊕	9	419149	1	
	50-60Hz	400V	Red	2P+⊕	9	419129	1	
	50-60Hz	400V	Red	3P+⊕	6	419136	1	
	50-60Hz	400V	Red	3P+N+⊕	6	419146	1	
	50-60Hz	500V	Black	2P+⊕	7	419127	1	
	50-60Hz	500V	Black	3P+⊕	7	419137	1	
	50-60Hz	500V	Black	3P+N+⊕	7	419147	1	
	50-60Hz	690V	Black	3P+⊕	5	419135	1	
	50-60Hz	690V	Black	3P+N+⊕	5	419145	1	
	CC	>250V	Grey	2P+⊕	8	419121	1	
	100-300Hz	>50V	Green	2P+⊕	10	419120	1	
	100-300Hz	>50V	Green	3P+⊕	10	419130	1	
	100-300Hz	>50V	Green	3P+N+⊕	10	419140	1	
	60Hz	440-460V	Red	3P+⊕	11	419131	1	
	60Hz	440-460V	Red	3P+N+⊕	11	419141	1	
	50-60Hz	>50V	Grey	2P+⊕	12	419128	1	
	50-60Hz	>50V	Grey	3P+⊕	12	419138	1	
	300-500Hz	>50V	Green	2P+⊕	2	419122	1	
	300-500Hz	>50V	Green	3P+⊕	2	419132	1	
	300-500Hz	>50V	Green	3P+N+⊕	2	419142	1	
	CC	>50-250V	Grey	2P+⊕	3	419123	1	
	50-60Hz	380-440V	Red	3P+⊕	3	419133	1	
	50-60Hz	380-440V	Red	3P+N+⊕	3	419143	1	
	32	50-60Hz	110V	Yellow	2P+⊕	4	419224	1
		50-60Hz	110V	Yellow	3P+⊕	4	419234	1
		50-60Hz	110V	Yellow	3P+N+⊕	4	419244	1
		50-60Hz	220V	Blue	2P+⊕	6	419226	1
50-60Hz		220V	Blue	3P+⊕	9	419239	1	
50-60Hz		220V	Blue	3P+N+⊕	9	419249	1	
50-60Hz		400V	Red	2P+⊕	9	419229	1	
50-60Hz		400V	Red	3P+⊕	6	419236	1	
50-60Hz		400V	Red	3P+N+⊕	6	419246	1	
50-60Hz		500V	Black	2P+⊕	7	419227	1	
50-60Hz		500V	Black	3P+⊕	7	419237	1	
50-60Hz		500V	Black	3P+N+⊕	7	419247	1	
50-60Hz		690V	Black	3P+⊕	5	419235	1	
50-60Hz		690V	Black	3P+N+⊕	5	419245	1	
CC		>250V	Grey	2P+⊕	8	419221	1	
100-300Hz		>50V	Green	2P+⊕	10	419220	1	
100-300Hz		>50V	Green	3P+⊕	10	419230	1	
100-300Hz		>50V	Green	3P+N+⊕	10	419240	1	
60Hz		440-460V	Red	3P+⊕	11	419231	1	
60Hz		440-460V	Red	3P+N+⊕	11	419241	1	
50-60Hz		>50V	Grey	2P+⊕	12	419228	1	
50-60Hz		>50V	Grey	3P+⊕	12	419238	1	
300-500Hz		>50V	Green	2P+⊕	2	419222	1	
300-500Hz		>50V	Green	3P+⊕	2	419232	1	
300-500Hz		>50V	Green	3P+N+⊕	2	419242	1	
CC		>50-250V	Grey	2P+⊕	3	419223	1	
50-60Hz		380-440V	Red	3P+⊕	3	419233	1	
50-60Hz		380-440V	Red	3P+N+⊕	3	419243	1	

Rated current (A)	Frequency	Rated voltage	Voltage colour	Poles	h ref.	Palazzoli code	Pack Qty	
63	50-60Hz	110V	Yellow	2P+⊕	4	419324	1	
	50-60Hz	110V	Yellow	3P+⊕	4	419334	1	
	50-60Hz	110V	Yellow	3P+N+⊕	4	419344	1	
	50-60Hz	220V	Blue	2P+⊕	6	419326	1	
	50-60Hz	220V	Blue	3P+⊕	9	419339	1	
	50-60Hz	220V	Blue	3P+N+⊕	9	419349	1	
	50-60Hz	400V	Red	2P+⊕	9	419329	1	
	50-60Hz	400V	Red	3P+⊕	6	419336	1	
	50-60Hz	400V	Red	3P+N+⊕	6	419346	1	
	50-60Hz	500V	Black	2P+⊕	7	419327	1	
	50-60Hz	500V	Black	3P+⊕	7	419337	1	
	50-60Hz	500V	Black	3P+N+⊕	7	419347	1	
	50-60Hz	690V	Black	3P+⊕	5	419335	1	
	50-60Hz	690V	Black	3P+N+⊕	5	419345	1	
	CC	>250V	Grey	2P+⊕	8	419321	1	
	100-300Hz	>50V	Green	2P+⊕	10	419320	1	
	100-300Hz	>50V	Green	3P+⊕	10	419330	1	
	100-300Hz	>50V	Green	3P+N+⊕	10	419340	1	
	60Hz	440-460V	Red	3P+⊕	11	419331	1	
	60Hz	440-460V	Red	3P+N+⊕	11	419341	1	
	50-60Hz	>50V	Grey	2P+⊕	12	419328	1	
	50-60Hz	>50V	Grey	3P+⊕	12	419338	1	
	300-500Hz	>50V	Green	2P+⊕	2	419322	1	
	300-500Hz	>50V	Green	3P+⊕	2	419332	1	
	300-500Hz	>50V	Green	3P+N+⊕	2	419342	1	
	CC	>50-250V	Grey	2P+⊕	3	419323	1	
	50-60Hz	380-440V	Red	3P+⊕	3	419333	1	
	50-60Hz	380-440V	Red	3P+N+⊕	3	419343	1	
	125	50-60Hz	110V	Yellow	2P+⊕	4	419424	1
		50-60Hz	110V	Yellow	3P+⊕	4	419434	1
		50-60Hz	110V	Yellow	3P+N+⊕	4	419444	1
		50-60Hz	220V	Blue	2P+⊕	6	419426	1
50-60Hz		220V	Blue	3P+⊕	9	419439	1	
50-60Hz		220V	Blue	3P+N+⊕	9	419449	1	
50-60Hz		400V	Red	2P+⊕	9	419429	1	
50-60Hz		400V	Red	3P+⊕	6	419436	1	
50-60Hz		400V	Red	3P+N+⊕	6	419446	1	
50-60Hz		500V	Black	2P+⊕	7	419427	1	
50-60Hz		500V	Black	3P+⊕	7	419437	1	
50-60Hz		500V	Black	3P+N+⊕	7	419447	1	
50-60Hz		690V	Black	3P+⊕	5	419435	1	
50-60Hz		690V	Black	3P+N+⊕	5	419445	1	
CC		>250V	Grey	2P+⊕	8	419421	1	
100-300Hz		>50V	Green	2P+⊕	10	419420	1	
100-300Hz		>50V	Green	3P+⊕	10	419430	1	
100-300Hz		>50V	Green	3P+N+⊕	10	419440	1	
60Hz		440-460V	Red	3P+⊕	11	419431	1	
60Hz		440-460V	Red	3P+N+⊕	11	419441	1	
50-60Hz		>50V	Grey	2P+⊕	12	419428	1	
50-60Hz		>50V	Grey	3P+⊕	12	419438	1	
300-500Hz		>50V	Green	2P+⊕	2	419422	1	
300-500Hz		>50V	Green	3P+⊕	2	419432	1	
300-500Hz		>50V	Green	3P+N+⊕	2	419442	1	
CC		>50-250V	Grey	2P+⊕	3	419423	1	
50-60Hz		380-440V	Red	3P+⊕	3	419433	1	
50-60Hz		380-440V	Red	3P+N+⊕	3	419443	1	

Features: rotoswitches padlockable in position 0 and 1 with padlock code 419000.
The sockets are designed to allow for padlocking, either in a stand-alone fashion or connected to the plugs. The padlock must have a min. shackle width of 10.5 mm, a height of 32 mm and a max. wire Ø of 3.5 mm.
Note: 125A versions under development.



Handles
IP66/IP67/IP68/IP69

Rated current (A)	Poles	Entry cable diameter (mm)	Palazzoli code	Pack Qty
16	2P+⊕	6.3 - 18	419001	5
	3P+⊕	6.3 - 18	419002	5
	3P+N+⊕	9 - 23	419003	5
32	2P+⊕ / 3P+⊕	9 - 23		5
	3P+N+⊕	13 - 27	419004	5
63	2P+⊕ / 3P+⊕ / 3P+N+⊕	14 - 36	419005	5
125	2P+⊕ / 3P+⊕ / 3P+N+⊕	16 - 50	419006	5



Straight panel-mounted flanges
IP66/IP67/IP68/IP69

Rated current (A)	Poles	Flange dimensions (mm)	Palazzoli code	Pack Qty
16	2P+⊕	65x83	419021	5
	3P+⊕	65x83	419022	5
	3P+N+⊕	65x83	419023	5
32	2P+⊕ / 3P+⊕	65x83		5
	3P+N+⊕	100x108	419024	5
63	2P+⊕ / 3P+⊕ / 3P+N+⊕	100 x 108	419025	5
125	2P+⊕ / 3P+⊕ / 3P+N+⊕	114x114	419026	5



20° angled panel-mounted flanges
IP66/IP67/IP68/IP69

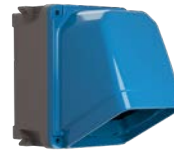
Rated current (A)	Poles	Flange dimensions (mm)	Palazzoli code	Pack Qty
16	2P+⊕	65x83	419031	5
	3P+⊕	65x83	419032	5
	3P+N+⊕	65x83	419033	5
32	2P+⊕ / 3P+⊕	65x83		5
	3P+N+⊕	100x108	419034	5
63	2P+⊕ / 3P+⊕ / 3P+N+⊕	100x108	419035	5
125	2P+⊕ / 3P+⊕ / 3P+N+⊕	114x114	419036	5



Padlock for rotoswitched sockets

Wire diameter (mm)	Material	Palazzoli code	Pack Qty
2.75	steel - brass	419000	1

Uses: the padlock prevents the safety ring from turning.



65° angled wall-mounted boxes
modular with TAIS system
IP66/IP67/IP68/IP69

For flange with dimensions (mm)	Box dimensions (mm)	Palazzoli code	Pack Qty
65x83	92x125	532131	1
100x108	125x185	532132	1
114x114	-	532133	1



Wall-mounted single gang boxes
modular with TAIS system
IP66/IP67/IP68/IP69

For flange with dimensions (mm)	Box dimensions (mm)	Palazzoli code	Pack Qty
65x83	92x125	532101	1
100x108	125x185	532102	1
114x114	-	532103	1



Wall-mounted double gang boxes
modular with TAIS system
IP66/IP67/IP68/IP69

For flange with dimensions (mm)	Box dimensions (mm)	Palazzoli code	Pack Qty
2x(65x83)	92x255	532121	1
2x(100x108) or 1x(65x83)+1x(100x108)	125x352	532122*	1

*Equipment included: 1 adapter frame, from flange 100x108 to flange 65x83, code 532841.

NEW



Adapter frame
from flange 100x108
to flange 65x83
for wall-mounted boxes
IP66/IP67/IP68/IP69

Adapter frame dimensions (mm)	For flange with dimensions (mm)	Palazzoli code	Pack Qty
100x108	65x83	532841	1



Blind flanges
for wall-mounted boxes
IP66/IP67/IP68/IP69

Flange dimensions (mm)	Palazzoli code	Pack Qty
65x83	532843	1
100x108	532842	1



Palazzoli contributes to the Research
on Breast Cancer Immunotherapy

Customer focused operations

Smart engineering

Top manufacture

Service excellence



Palazzoli S.p.a
Via F. Palazzoli, 31 - 25128 Brescia - Italy
Tel. +39 030 2015.1
palazzoli.com



Palazzoli
SISTEMI ELETTRICI D'AUTORE