

NEW PRODUCT

# DIMENSION

IO-Link  
960W, 3-phase



Save time  
Plug-and-Play installation



Save costs  
preventative maintenance



Improve customer service  
speed up fault analysis

## IO-Link: Benefits and integration

### Persistent

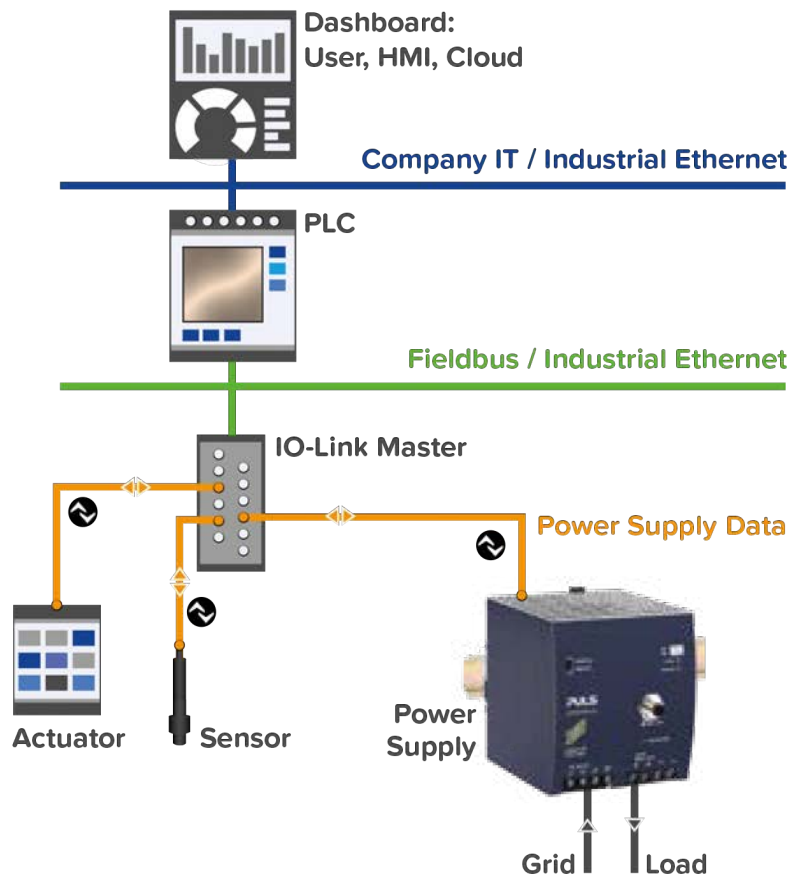
The configuration data of the power supply is saved by the IO-Link Master, making replacements easier and faster.

### Flexible

Adaptation to various fieldbus systems is possible because the IO-Link Master operates as a flexible interface between protocol levels.

### Reliable

Stable data transmission at all times because the IO-Link module is powered by the communication line.



**NEW PRODUCT**



**PISA-B gives you more of everything.  
Except effort.**

PISA-B is the most efficient electronic circuit breaker (ECB). It distributes the current, protects your loads from over-current or short-circuits and monitors the operating status in DC 24V systems.

The 8-channel programmable capability can identify and isolate individual faulty branches. It shuts down the affected channels only and secures the constant power supply of the remaining loads.

## PISA-B. The next generation of electronic circuit breakers.



**Protect**



**Inform**



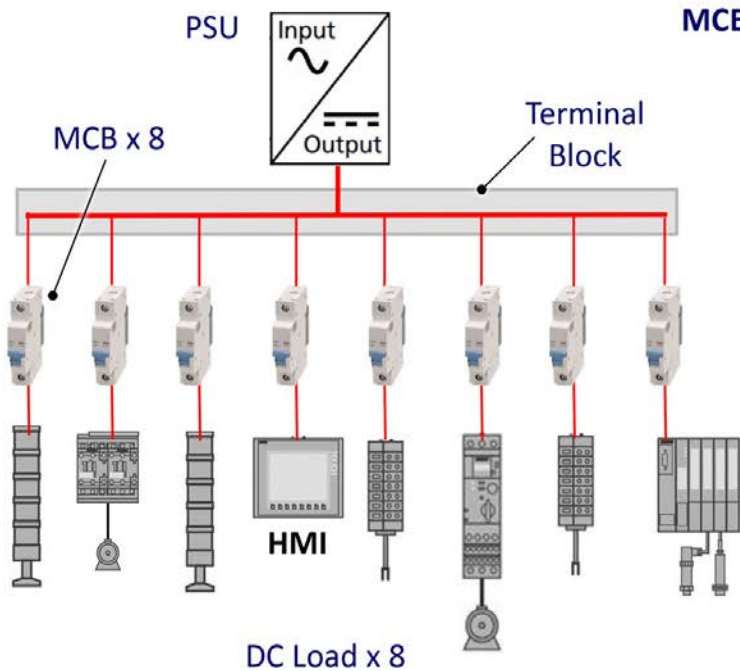
**Secure**



**Assist**

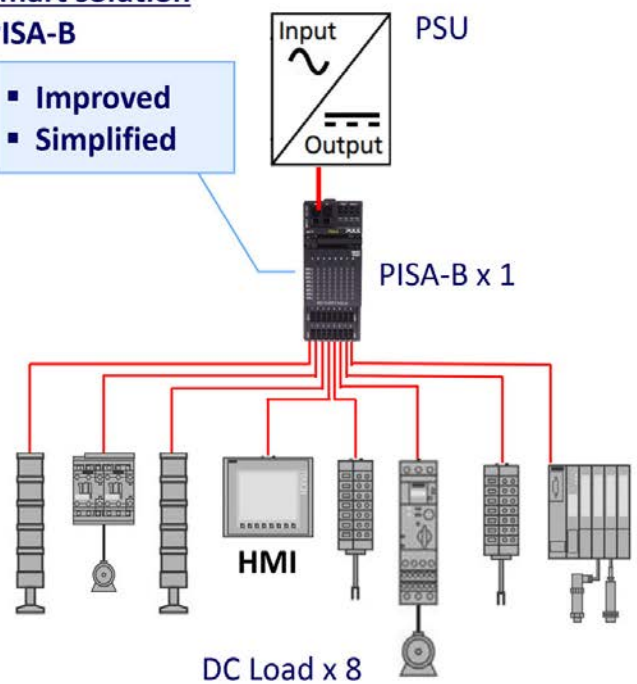
### 8 Channels in One Body

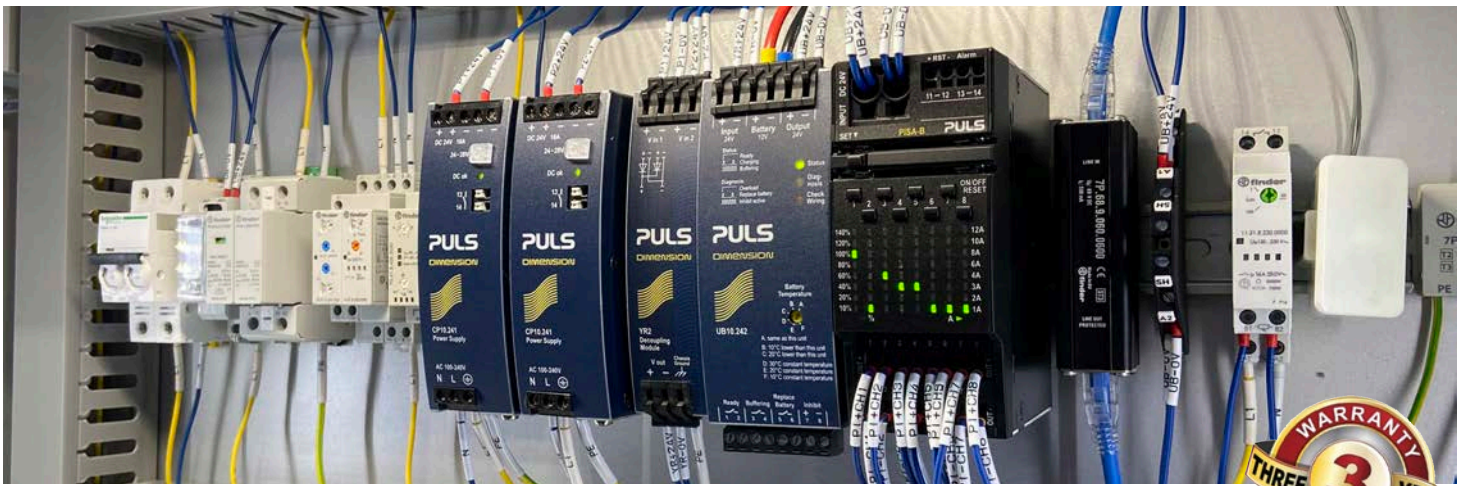
Conventional solution  
MCB



Smart solution  
PISA-B

- Improved
- Simplified





## DIN rail power supplies

พาวเวอร์ซัพพลาย PULS จะมีทั้งรุ่นที่เป็น Single phase และ Three phase มีแอมป์สูงสุดที่ 40 แอมป์ มีมาตรฐานรองรับ สามารถเข้าได้กับทุกงานอุตสาหกรรม ไม่ว่าจะเป็นงานเอกชน หรืองานราชการ และรับประกันสินค้า 3 ปี



### MiniLine Series - Single phase

| Article No. | DC output |      | Range    | Power | Input      | Efficiency | Dimensions WxHxD (mm) |    |    |
|-------------|-----------|------|----------|-------|------------|------------|-----------------------|----|----|
| ML30.241    | 24V       | 1.3A | 24-28vdc | 30W   | AC100-240V | 89.4%      | 22.5                  | 75 | 91 |
| ML60.241    | 24V       | 2.5A | 24-28vdc | 60W   | AC100-240V | 89.7%      | 45                    | 75 | 91 |

### PIANO Series - Single phase



| Article No. | DC output |      | Range    | Power | Input      | Efficiency | Dimensions WxHxD (mm) |     |     |
|-------------|-----------|------|----------|-------|------------|------------|-----------------------|-----|-----|
| PIM36.241   | 24V       | 1.5A | 24-28vdc | 36W   | AC100-240V | 90.6%      | 22.5                  | 90  | 91  |
| PIM60.241   | 24V       | 2.5A | 24-28vdc | 60W   | AC100-240V | 91.8%      | 36                    | 90  | 91  |
| PIM90.241   | 24V       | 3.8A | 24-28vdc | 90W   | AC100-240V | 93.8%      | 36                    | 90  | 91  |
| PIC120.241C | 24V       | 5A   | 24-28vdc | 120W  | AC200-240V | 90.5%      | 39                    | 124 | 124 |
| PIC240.241C | 24V       | 10A  | 24-28vdc | 240W  | AC200-240V | 91.4%      | 49                    | 124 | 124 |
| PIC480.241C | 24V       | 20A  | 24-28vdc | 480W  | AC200-240V | 95.7%      | 49                    | 124 | 124 |

### DIMENSION Series - Single-phase



| Article No. | DC output |     | Range    | Power | Input      | Efficiency | Dimensions WxHxD (mm) |     |     |
|-------------|-----------|-----|----------|-------|------------|------------|-----------------------|-----|-----|
| CP5.241     | 24V       | 5A  | 24-28vdc | 120W  | AC100-240V | 94.3%      | 32                    | 124 | 102 |
| CP10.241    | 24V       | 10A | 24-28vdc | 240W  | AC100-240V | 95.2%      | 39                    | 124 | 117 |
| CP20.241    | 24V       | 20A | 24-28vdc | 480W  | AC100-240V | 95.6%      | 48                    | 124 | 127 |
| QS40.244    | 24V       | 40A | 24-28vdc | 960W  | AC200-240V | 94.6%      | 125                   | 124 | 127 |

## DIMENSION Series - Three phase



| Article No. | DC output |     | Range    | Power | Input      | Efficiency | Dimensions WxHxD (mm) |     |     |
|-------------|-----------|-----|----------|-------|------------|------------|-----------------------|-----|-----|
|             | 24V       | 10A |          |       |            |            | 62                    | 124 | 117 |
| CT10.241    | 24V       | 10A | 24-28vdc | 240W  | AC380-480V | 92.9%      | 62                    | 124 | 117 |
| QT20.241    | 24V       | 20A | 24-28vdc | 480W  | AC380-480V | 94.8%      | 65                    | 124 | 127 |
| QT40.241    | 24V       | 40A | 24-28vdc | 960W  | AC380-480V | 95.3%      | 110                   | 124 | 124 |

## DC-UPS



| Article No. | DC output |     | Input         | Dimensions WxHxD (mm) |     |     | Special feature                       |
|-------------|-----------|-----|---------------|-----------------------|-----|-----|---------------------------------------|
|             | 24V       | 10A |               | 123                   | 124 | 119 |                                       |
| UBC10.241   | 24V       | 10A | DC 24V        | 123                   | 124 | 119 | battery included                      |
| UB20.241    | 24V       | 20A | DC 24V        | 46                    | 124 | 127 | for battery sizes from 3.9Ah to 150Ah |
| UB40.241    | 24V       | 40A | DC 24V (±25%) | 46                    | 124 | 127 | for battery sizes from 12Ah to 200Ah  |

## Redundancy Modules



| Article No. | DC output |     | Input     | Dimensions WxHxD (mm) |     |     | Special feature            |
|-------------|-----------|-----|-----------|-----------------------|-----|-----|----------------------------|
|             | 12-24V    | 20A |           | 39                    | 124 | 124 |                            |
| PIRD20.241  | 12-24V    | 20A | DC 12-28V | 39                    | 124 | 124 | 2x10A; DC-OK relay contact |
| YR20.242    | 12-28V    | 20A | DC 12-28V | 32                    | 124 | 117 | 2x10A input                |
| YR40.242    | 12-28V    | 40A | DC 12-28V | 36                    | 124 | 127 | 2x20A input                |
| YR80.242    | 12-28V    | 80A | DC 12-28V | 46                    | 124 | 127 | 2x40A input                |

## Wiring diagram, 1+1 Redundancy, 10A output current

